



# GIS in GSA

---

Esri's November DC Meet-up  
November 17, 2016

Terry Forline

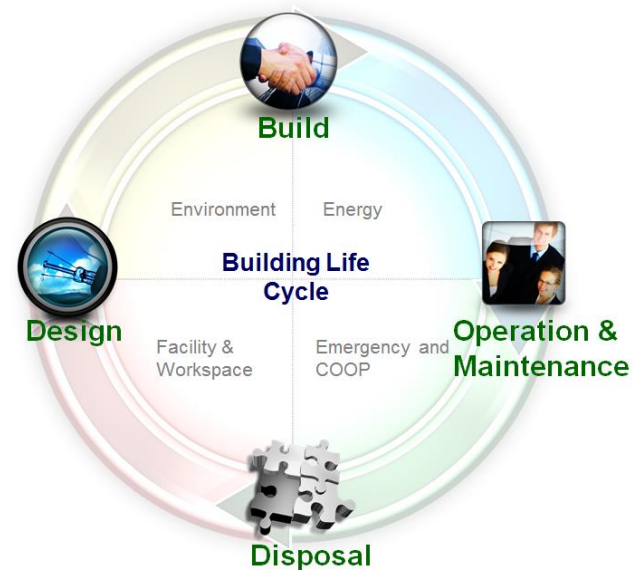
Acting Program Manager  
GIS Center of Excellence

[terry.forline@gsa.gov](mailto:terry.forline@gsa.gov)



# The Big Picture

- GIS is an integral part of our Building Life-cycle technology stack
- Plan Build Operate Lease Dispose
- Building Management Information
- Central Facility Repository
- Business Intelligence
- REXUS

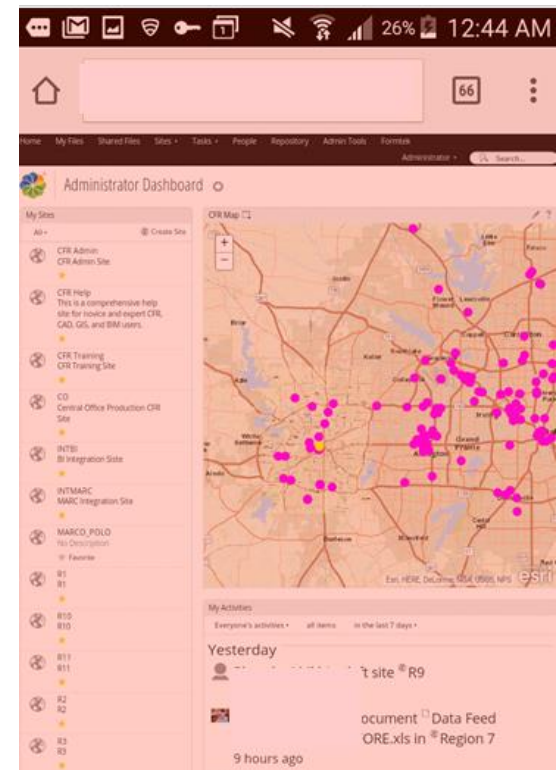




# Central Facility Repository

Single Source of Truth for building assets 'Current Conditions'

- Across all business lines
- Technology integration that supports full building life-cycle
- 3D Display
- Site Plans with buildings geo located
- Accessible via Single Sign-on
- Security ATO since January 2015
- No Software Installation
- Mobile - Any Device





# Building Management Information

Assignment Information,  
OA, Variance, Expirations,  
OA Billing, Finance,  
Parking, Space, Vacant  
Space, Zero SF, Leases,  
Outleases, Contracts,  
Energy Utilization, Projects

The screenshot shows the GSA Location Dashboard. At the top, there's a navigation bar with tabs: General, ASA, OA, Variance, Expirations, OA Billing, Finance, Parking, Space, Vacant Space, Zero SF, Leases, Outleases, Contracts, Energy Utilization, and Projects. The 'General' tab is selected. Below the navigation bar, there's a section titled 'Change to a Different Location' with a 'Location Code' input field and 'Apply' and 'Reset' buttons. To the right of this is a map titled 'Location Code Latitude / Longitude Map' with a note: 'Note: If the below map does not load, click your browser's "Refresh" button.' The map shows the United States and parts of Canada and Mexico. Below the map, there are several sections, each with a title and two columns of text. The first section is 'General Information (Source for all sections = REXUS)' with two columns of text. The second section is 'Classification' with two columns of text. The third section is 'Space' with two columns of text. The fourth section is 'Security and Fire / Life Safety' with two columns of text. The fifth section is 'Contacts and Location Community' with two columns of text. The sixth section is 'Responsibility and FRPC Restriction' with two columns of text. The seventh section is 'Delegation' with two columns of text. Each section has a 'Refresh' button next to it.



# Where we are...

My Sites

All • Create Site

- R2  
R2  
★
- R3  
R3  
★
- R4  
R4  
★

My Documents

I've Recently Modified •

- R4 and Rexus Buildings  
Comparison\_11\_09\_2016\_12\_22\_55.html  
Created 3 hours ago in CFR Admin
- R07 and Rexus Buildings  
Comparison\_11\_09\_2016\_12\_22\_53.html  
Created 3 hours ago in CFR Admin
- R5 and Rexus Buildings  
Comparison\_11\_09\_2016\_12\_20\_23.html  
Created 3 hours ago in CFR Admin
- R8 and Rexus Buildings  
Comparison\_11\_09\_2016\_12\_20\_11.html  
Created 3 hours ago in CFR Admin
- R3 and Rexus Buildings

CFR Map

**TX 0075 - Eldon B. Mahon US Courthouse**

**Building Address:**  
510 W 10TH ST  
FORT WORTH  
TARRANT  
TX  
76102-3648

**Building Space:**  
Design Gross SQFT: 134318.1  
Calculated Gross SQFT: 134318.1  
Rentable SQFT: 119566.77

**Vacancy Rate:**  
% Comparing to Total: null  
% Comparing to Rentable: null  
Class Code: 122  
Property Code: 12

[Zoom to](#)

POWERED BY esri



# Where we are going!

### My Sites

All ▼ Create Site

- ADMIN  
No Description  
★
- AI  
No Description  
★
- ALF  
No Description  
★

### My Tasks

Active Tasks ▼ Start Workflow

Active Tasks | Completed Tasks

Review the tasks assigned to you  
Different types of tasks can appear in this task list and you need to address each one. This could involve reviewing a document or simply accepting an invitation to a site.

### Asset Portal

Source Data

- ☒ NYC DoITT CityGML
- ☐ OpenStreetMap

Styling

- ☐ Source colors
- ☐ Color by height
- ☐ Broken OSM relations

Heights ▬ All

Zoom to Choose...

☐ Enable shadows

☐ Flyover mode

[Learn more about](#) 3D Tiles

A 3D perspective view of a city skyline with various colored buildings. A yellow building is labeled '265302071' and a green building is highlighted.

### 101 Park Avenue

OSM	<a href="#">relation:2167412</a>
name	101 Park Avenue
type	building

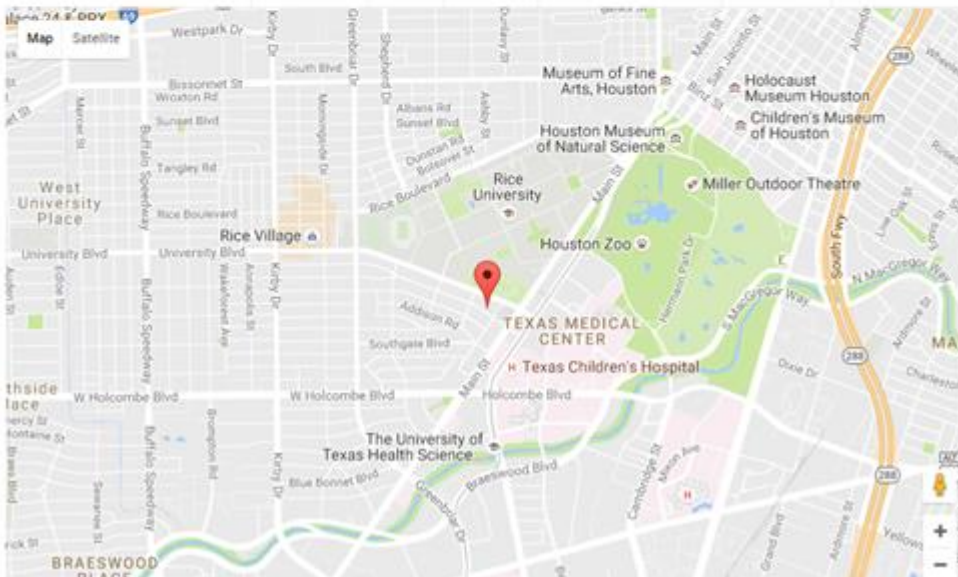


# Automated Advanced Acquisition Program

6. Zip Code\*

Click on 'Validate Address' every time you change address for the offer.  
After you click the 'Validate Address' button, review the map below to confirm that your address has plotted correctly. If correct, click the address in the table immediately above the map and a pop-up box will appear for you to click 'OK' to confirm. If address is not plotting correctly, contact AAAPManager@gsa.gov.

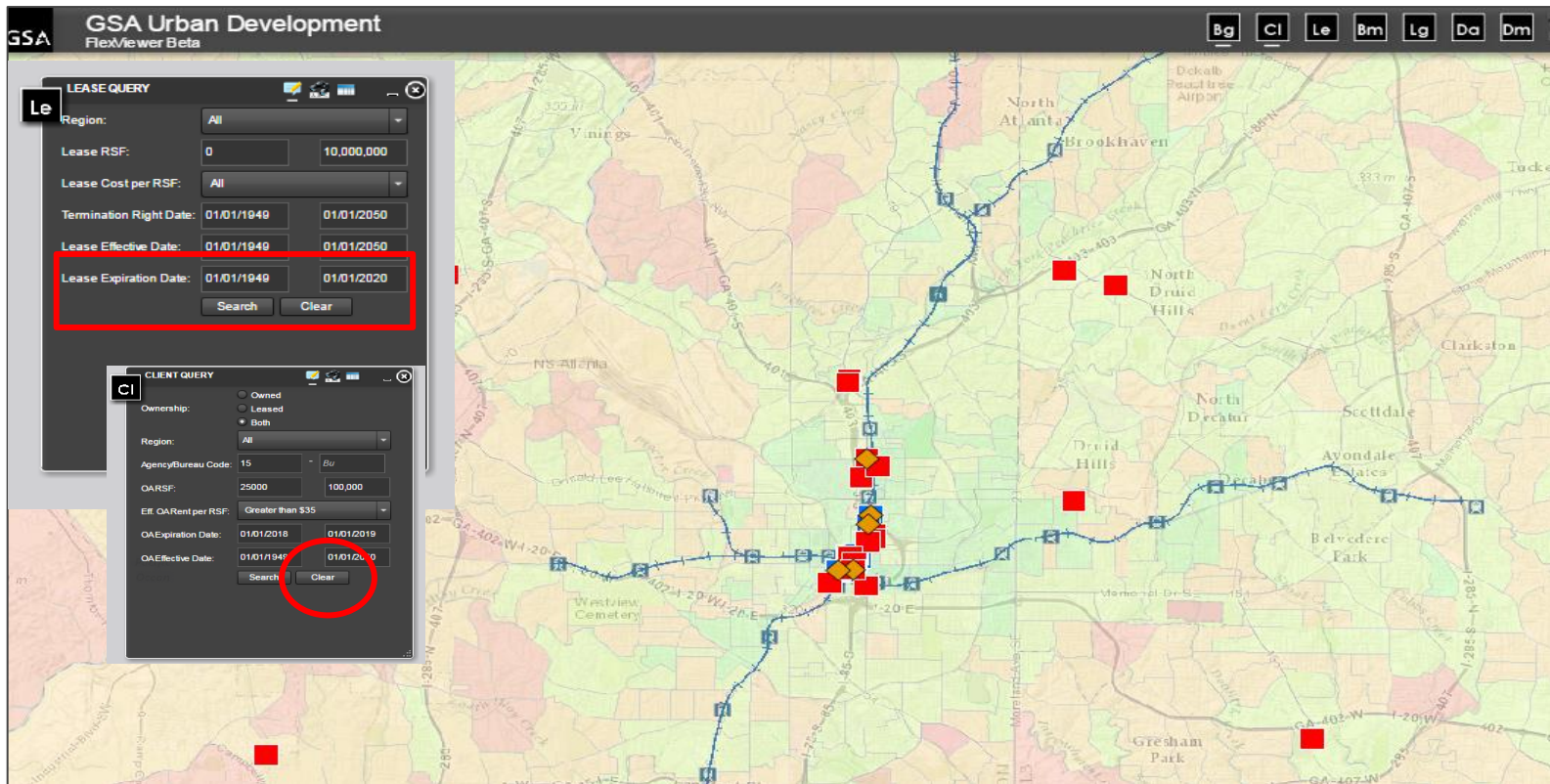
Street	City	State	Zip	County	Latitude	Longitude
1940 Dryden Road	Houston	TX	77030	Harris County	29.711	-95.403



AAAP's integrated GIS component ensures offers are located within a client agency's delineated area, and the application uses price and other factors to automatically evaluate and rank offers for lease award.



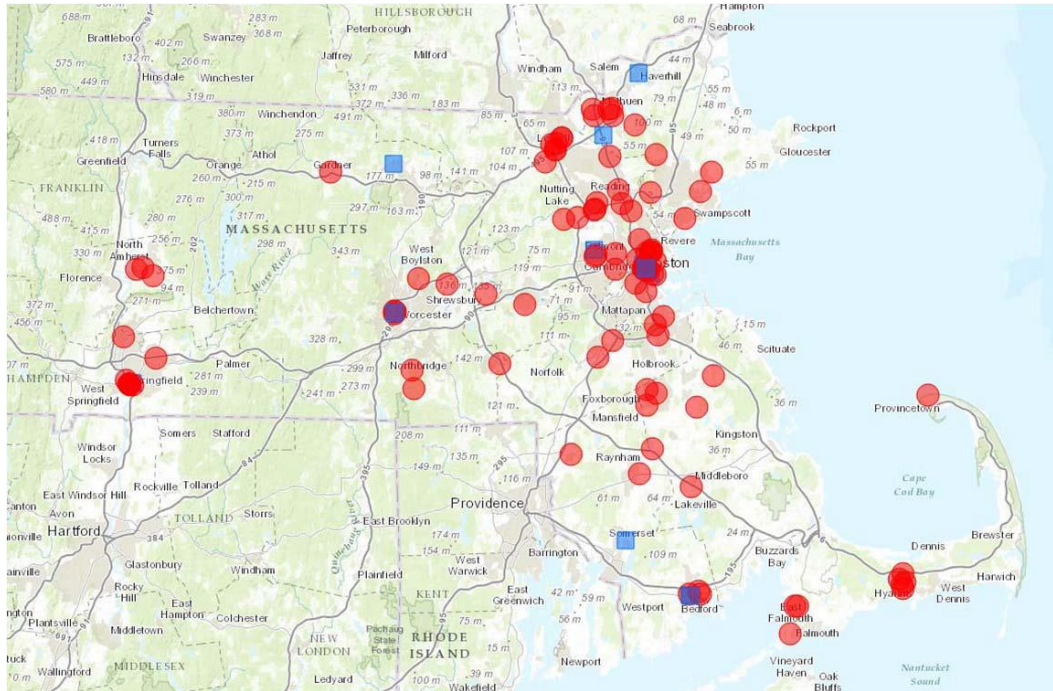
# Multi Asset Planning



The Urban Development program created the MAP tool to support PBS business lines in making complex inventory decisions that consider community planning, sustainability, and PBS business factors.



# The Inventory of Owned and Leased Properties (IOLP)

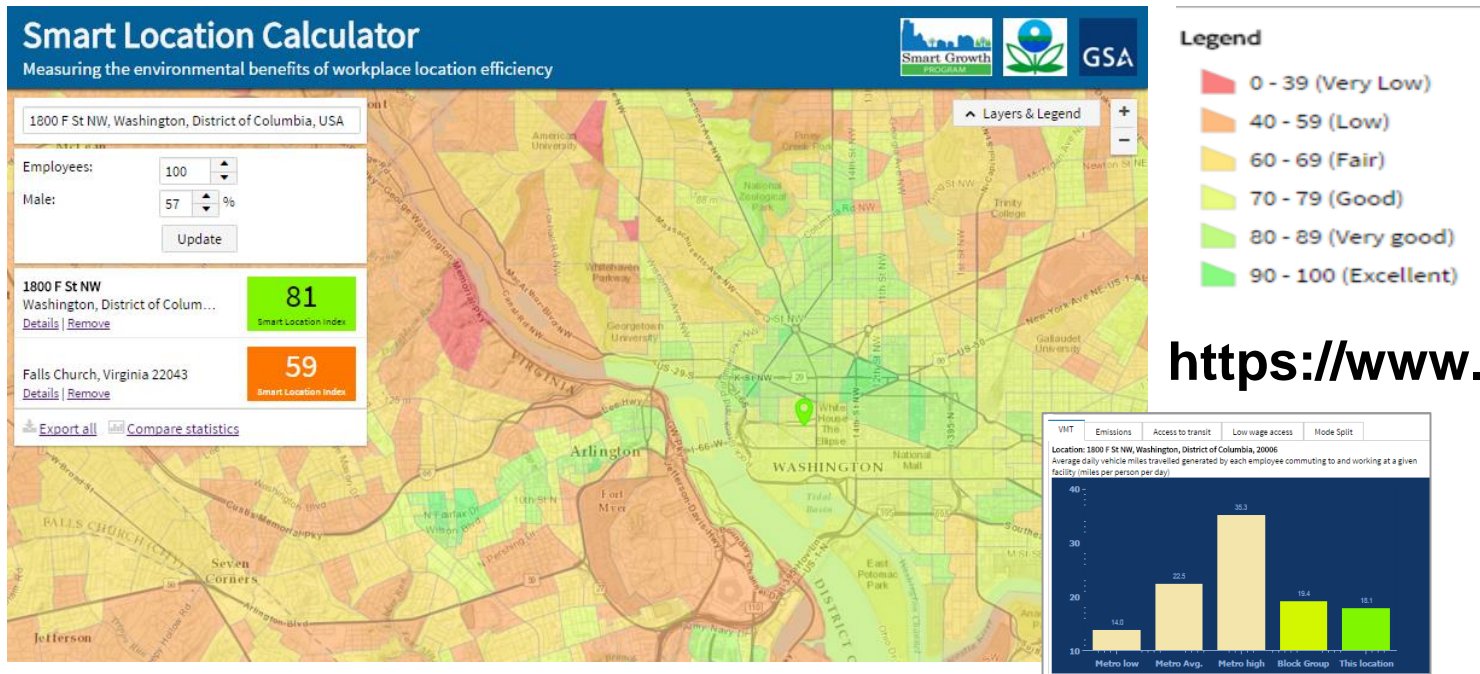


[www.gsa.gov/iolp](http://www.gsa.gov/iolp)

IOLP allows users to search properties owned and leased by the General Services Administration (GSA) across the United States, Puerto Rico, Guam and American Samoa. Accessible to users via Mac or PC, SmartPhone or Tablet.



# Smart Location Calculator

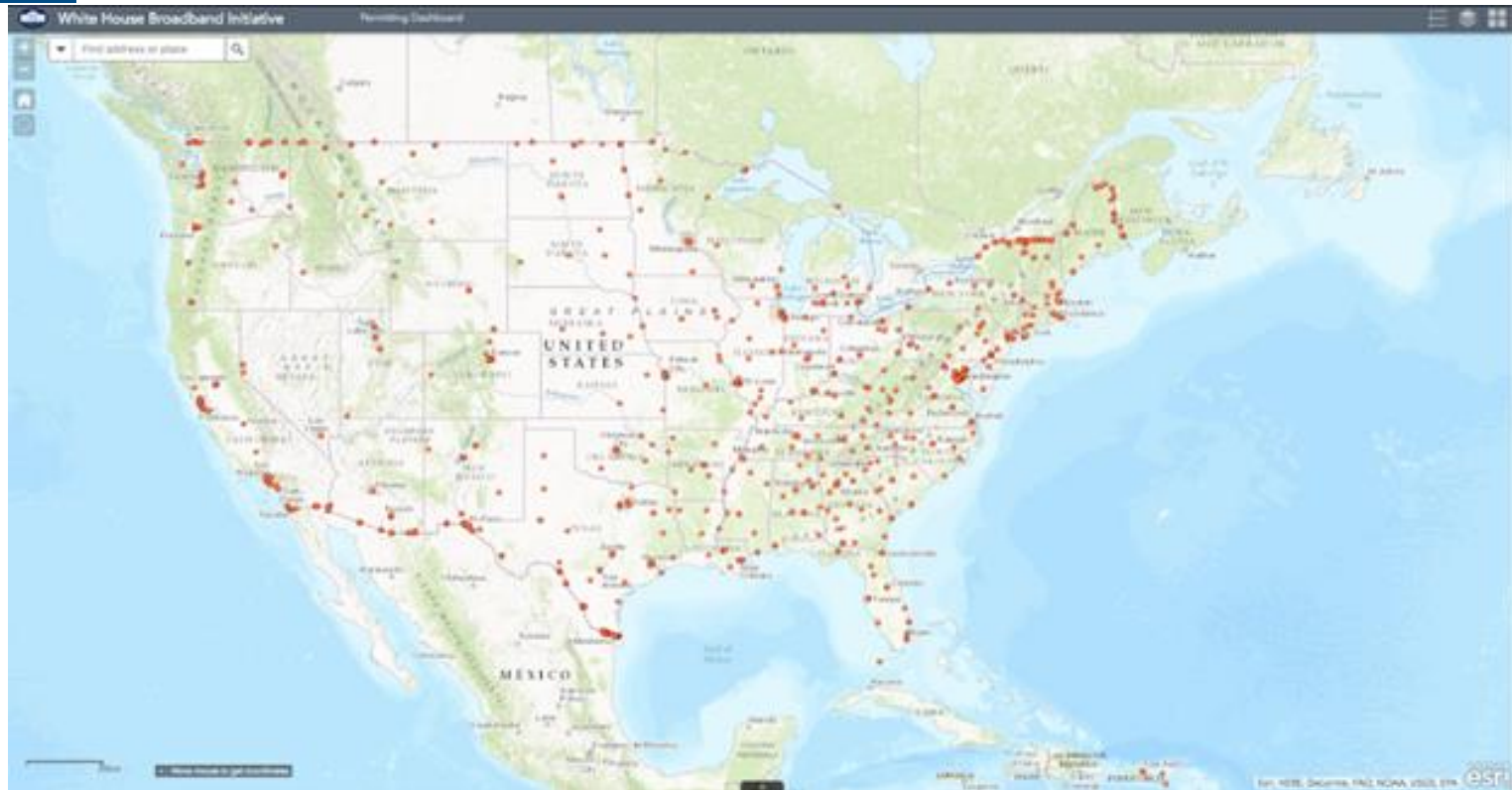


<https://www.slc.gsa.gov>

GSA's Smart Location Calculator lets GSA consider the "location efficiency" of any existing or potential Federal location.



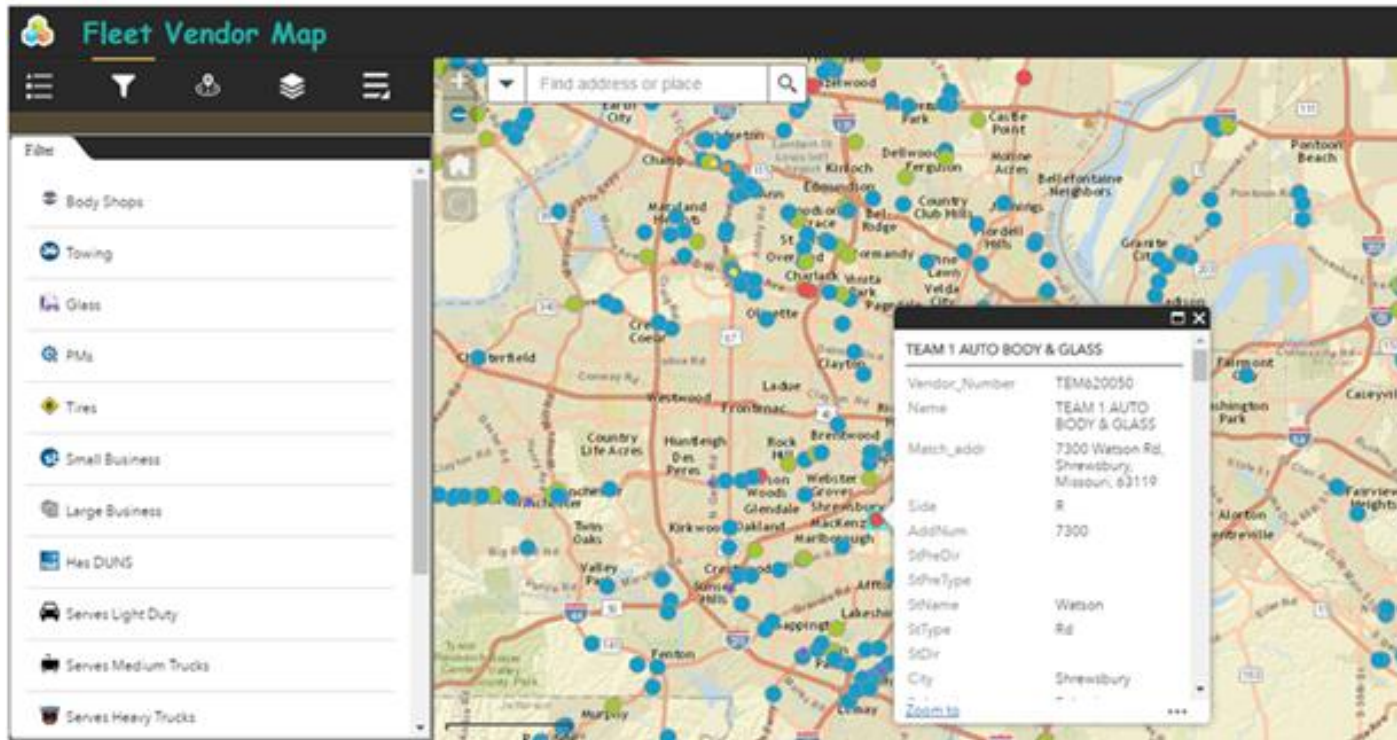
# White House Broadband



A collaborative map that allows telecommunications providers to assess prime locations for antenna placement or leasing. GSA aggregated the map source links into the single map and hosts it on the ArcGIS Online platform.



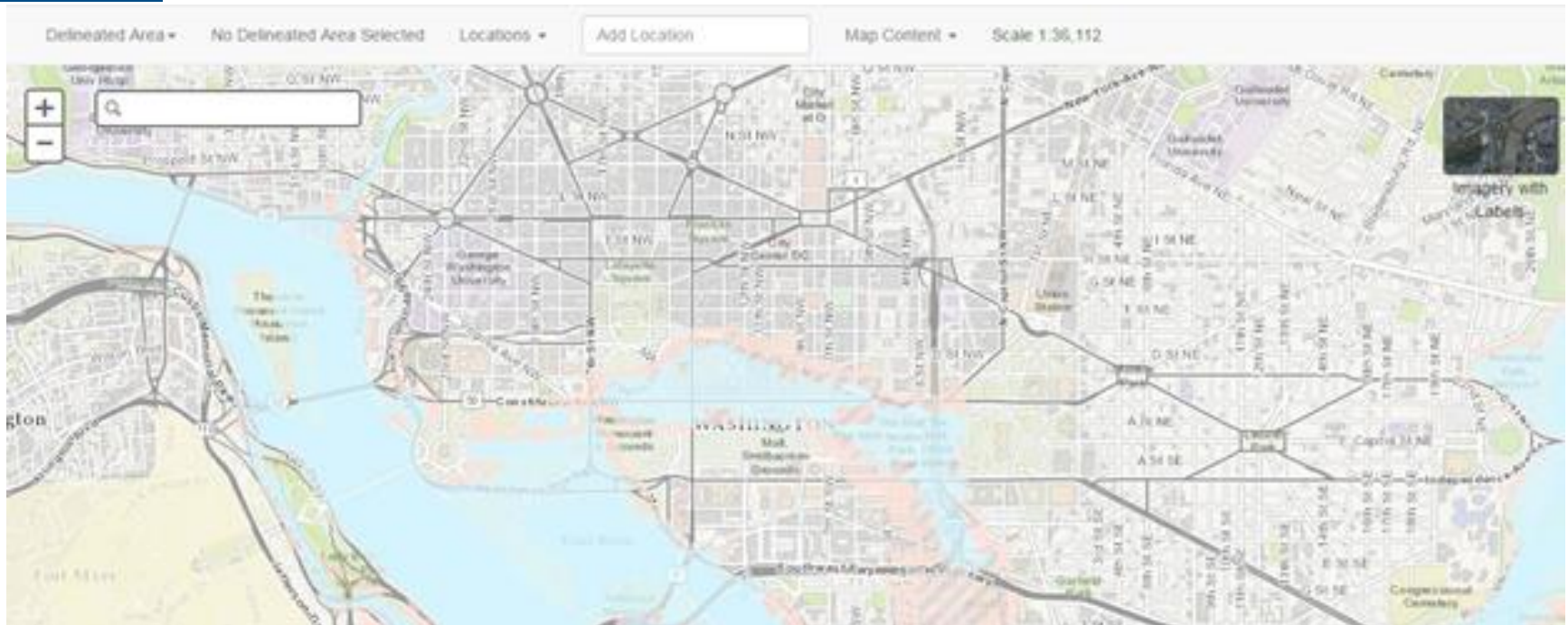
# GSA Fleet Vendor Map



Using data from the Fleet Management System and System for Award Management, this map identifies and directs federal customers and their drivers to the best vendor available.



# Bullseye Tool



GSA's Leasing specialists use the Bullseye tool to help insure GSA is getting competitive market rates on building leases. For a delineated area, Bullseye returns its market area, submarket, Flood zone, and seismic areas.



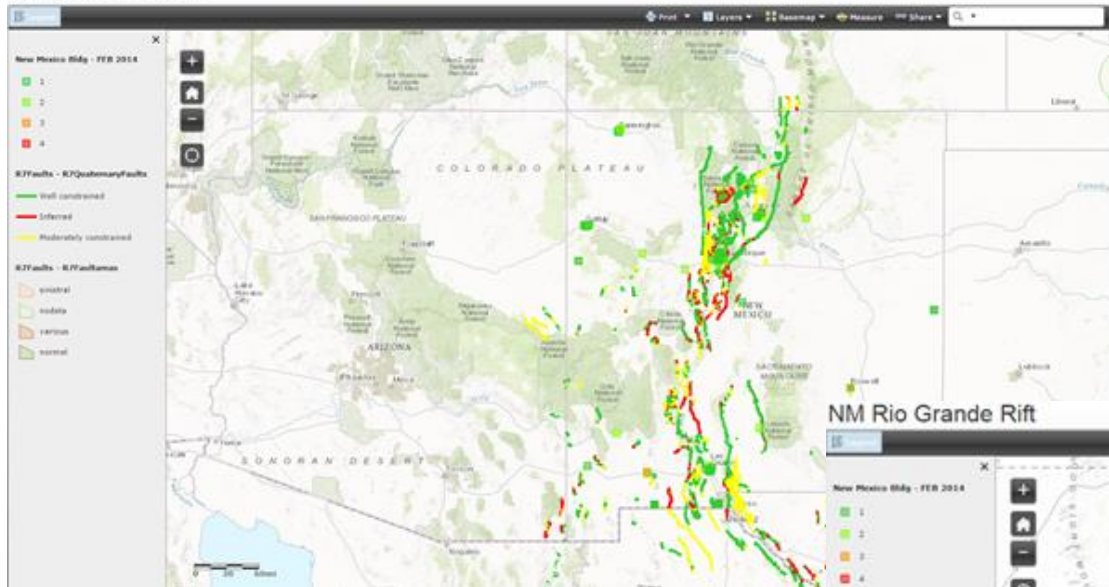
# Regional Usage

- Emergency Response and Preparedness
  - Hurricanes, Flooding, Earthquake
- Tenant Utilization Rates
- Agency Reorganization Analysis
- Waste Management Analysis
- Validation of PBS Property
- Site Acquisition Data
  - Property boundaries, Licenses Agreements, Easements within Site
- Building Locations on Property
- Tracking Allocation of Surface Parking, Land, & Wareyards
  - Number of Parking Spaces, Tenant Leasing of Land and Wareyards
  - Supporting Occupancy Agreements

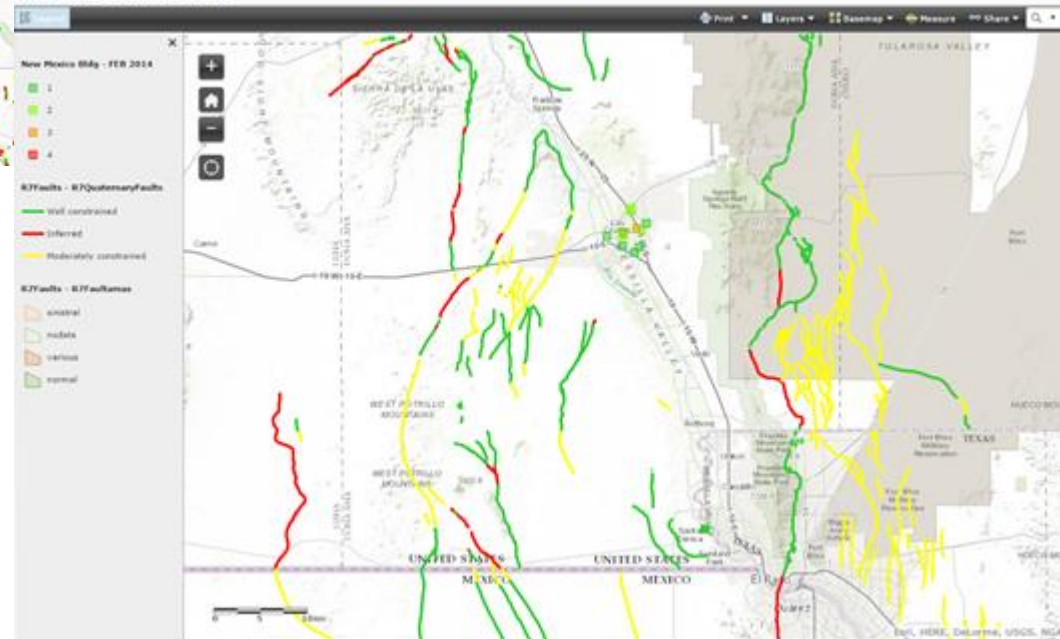


# Earthquake Analysis

NM Rio Grande Rift



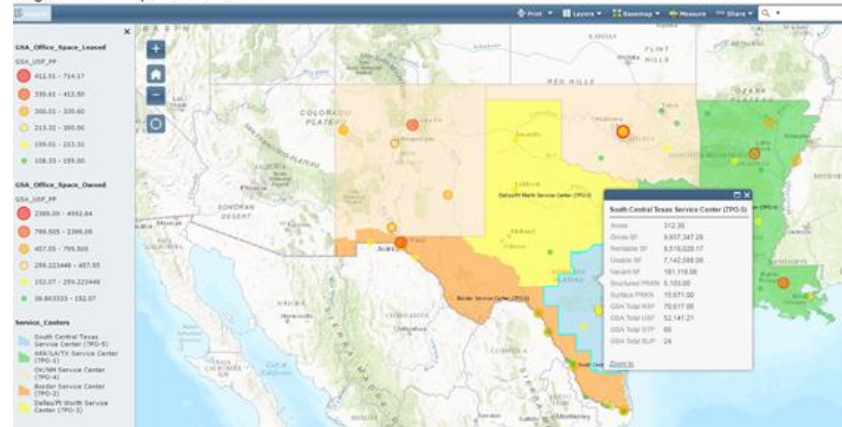
NM Rio Grande Rift



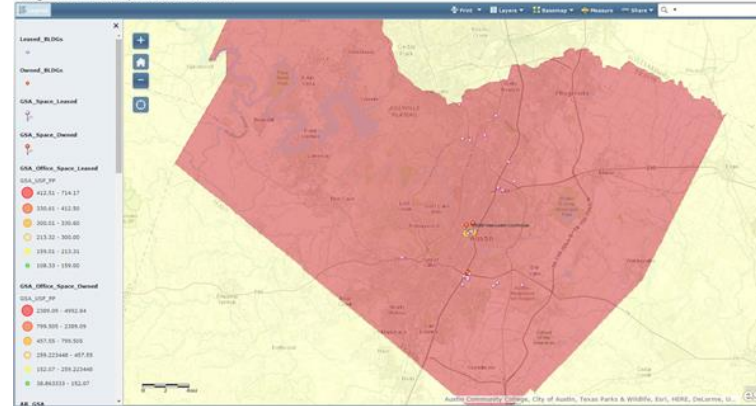


# Space Utilization

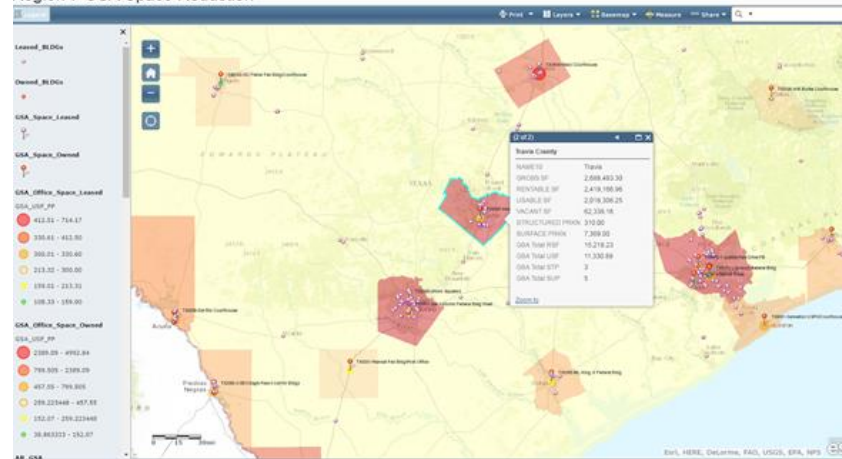
Region 7 GSA Space Reduction



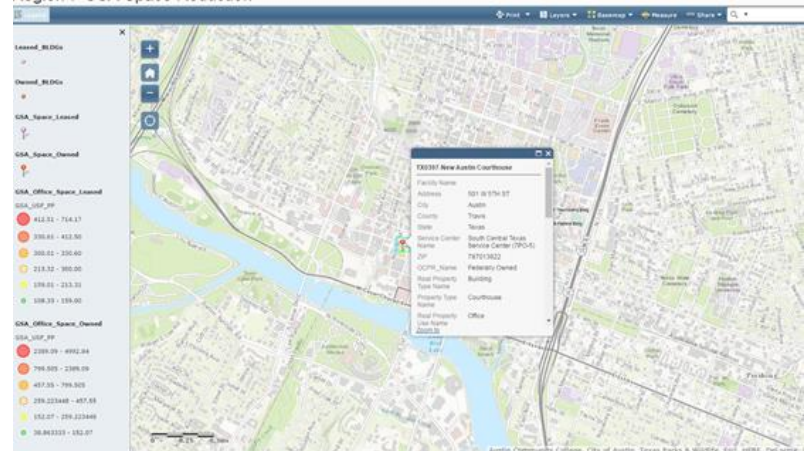
Region 7 GSA Space Reduction



Region 7 GSA Space Reduction

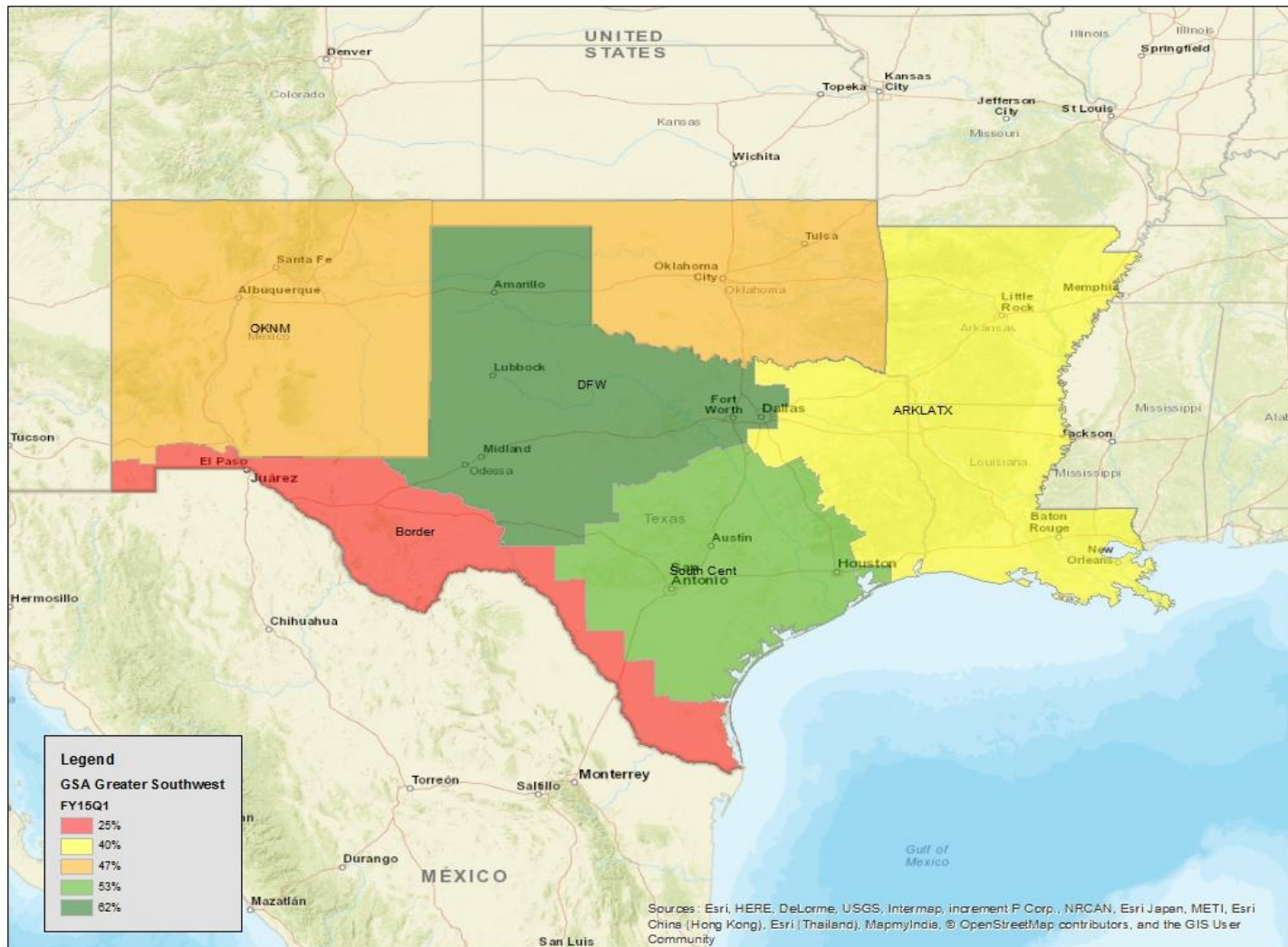


Region 7 GSA Space Reduction





# Non-hazardous Solid Waste Management



# questions???

Contact us at:  
[gis@gsa.gov](mailto:gis@gsa.gov)