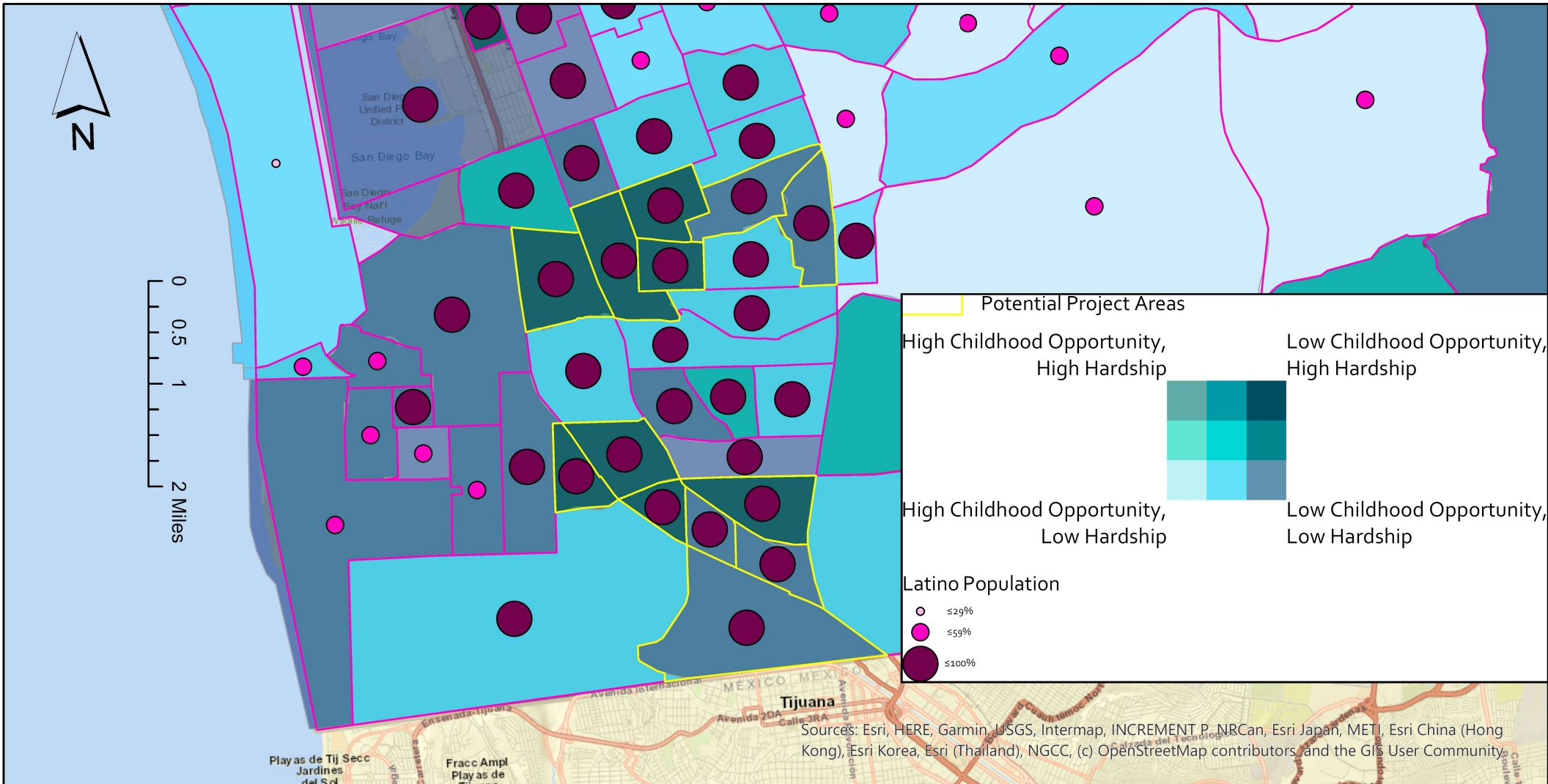


# Promoting Health Equity in the San Diego South Bay Region



The Hardship Index (2017) is a composite of 6 scores: unemployment rate, dependency (% of the population >65 years or <18 years), low education attainment (% of those over the age of 25 with less than a high school education), per capita income, housing overcrowding (>1 occupant/room), and poverty level (<100% of federal poverty).

The Child Opportunity Index (2015) is a composite index that captures neighborhood resources and conditions that matter for children's healthy development, focusing on 29 indicators across 3 domains: education, health and environment, and social and economic.